



## Custom made to fit any home

Flexible entrance configurations and a low profile floor make for virtually unlimited horizontal and vertical access. Choose from interior or exterior mount.

Hoyt Elevators are designed and engineered to adhere to the American National Standard Safety Code for Elevators and Escalators by a Professional Engineer accredited by the American Society of Mechanical Engineers.

State code requires elevators to be installed and inspected by licensed installers/inspectors.

## Order your elevator today!

Please visit [www.hoytelevator.com](http://www.hoytelevator.com) and complete the form located on the "order" page or call (877) 372-8685.

A local distributor will contact you to schedule an appointment to obtain measurements and determine the best machine configuration for your home. Shortly after, you will receive a proposal to review.

Upon your approval, a contract with plans and specifications for the installation will be submitted.

A 50 percent deposit or written approval from your home financing institution\* will confirm your order and begin the manufacturing process.

Installation contractors will arrive at your home and install the unit as per installation specifications.

\*Please contact Hoyt Elevator for assistance with arranging financing with your home lender. Hoyt Elevator will recommend a lender upon request.



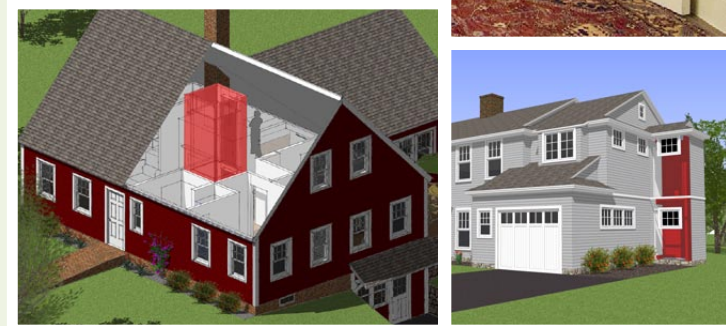
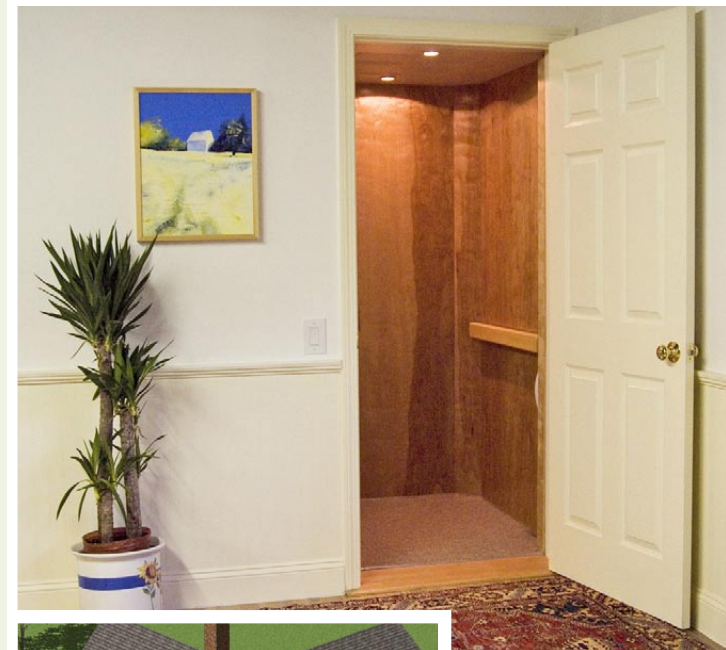
Handicap  
Accessible



P.O. Box 5215  
Haverhill, MA 01835

Phone: (978) 372-3100  
Fax: (978) 372-3398  
Toll-Free: (877) 372-8685

[www.hoytelevator.com](http://www.hoytelevator.com)



## The affordable residential elevator solution

Efficient, vertical access for new construction, retrofits, apartments, condominiums, aged and handicap accessibility.





Enjoy independence and mobility in your own home. Designed specifically for residential use, the Hoyt Elevator is perfect for new construction, apartments or condominiums.

## Elevating your quality of life

When mobility becomes an issue, why relocate or install an obstructive stair lift? For the price of an unwieldy handicap access ramp, regain independence in your own home and enjoy easy access to every level with a residential elevator.

- Fast, easy installation
- Access two, three or four levels
- Interior or exterior mount
- Flexible entrance configurations
- No need for pit or machine room
- Quiet operation



Handicap  
Accessible



The cab is equipped with a solid brass master control panel, emergency telephone, natural birch interior, beige carpet and automatic lighting.

### Elevator door layouts



Single  
Door



Two-Door  
Opposing



Two-Door  
Adjacent

## Simple, efficient installation process

In an existing shaft prepared to local building codes, unit installation may be completed in one day. The machine may be installed directly onto a reinforced first level sub-floor, interior basement slab or an exterior poured slab.

	INTERIOR RETROFIT	EXTERIOR RETROFIT
<b>DAY 1 &amp; 2</b>	Floor cuts, floor and wall framing, drywall and tape	Excavate, footings, block frostwall, siding rip, door framing, slab pour
<b>DAY 3 &amp; 4</b>	Installation of elevator	Installation of elevator
<b>DAY 5 &amp; 6</b>	Drywall finish, door install, prime walls and woodwork	Shaft enclosure panels, siding, door install, prime siding and woodwork
<b>DAY 7 &amp; 8</b>	Finish paint, machine start-up	Finish paint, machine start-up

## Elevator specifications

### A standard elevator package includes:

- Cab clear floor dimensions: 40" x 46"
- 550 lb. two-person payload capacity
- 500 lb. counterweight
- 1800 lb. total unit weight
- Aluminum shaft and car frame
- Multiple shaft shear panels
- Interior natural birch panel finish
- Ash handrails
- Automatic car lighting
- Cab telephone
- 17' shaft height, 9' lift height
- 1 hp energy efficient gear motor
- Chain drive w/ redundancy
- 35 feet/minute travel speed
- Automatic interior door operator
- Illuminated control buttons on plate brass
- 24vdc controls w/ computer and back-up power
- 220vac, 1ph, 15 amp power requirements
- Emergency back-up lowering device
- Cab and shaft door sensors
- Shaft door electromechanical locks
- Upper/lower and slack chain safety switches
- Full-year warranty on parts and service

### Additional options include:

- Second interior car door (adjacent or opposing)
- Three-level access (28' max. shaft height)
- Upgrade to 750 lb. payload capacity
- Automatic exterior shaft door openers
- Power and telephone raceway to first level
- Installation by certified contractor
- Annual service and inspection contract